

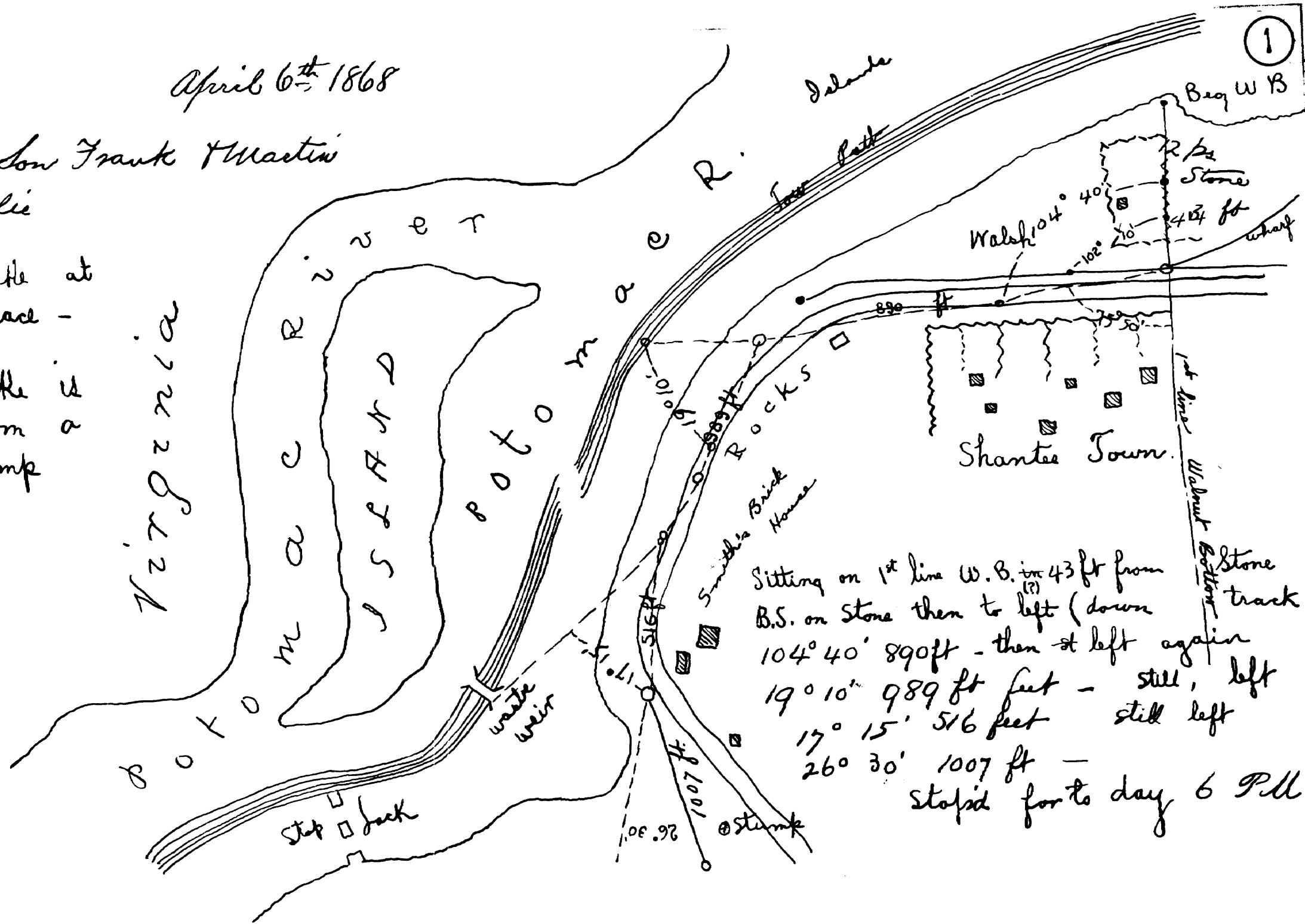
137-2

April 6th 1868

Mr. Quinn, son Frank & Martin
Self & Willie

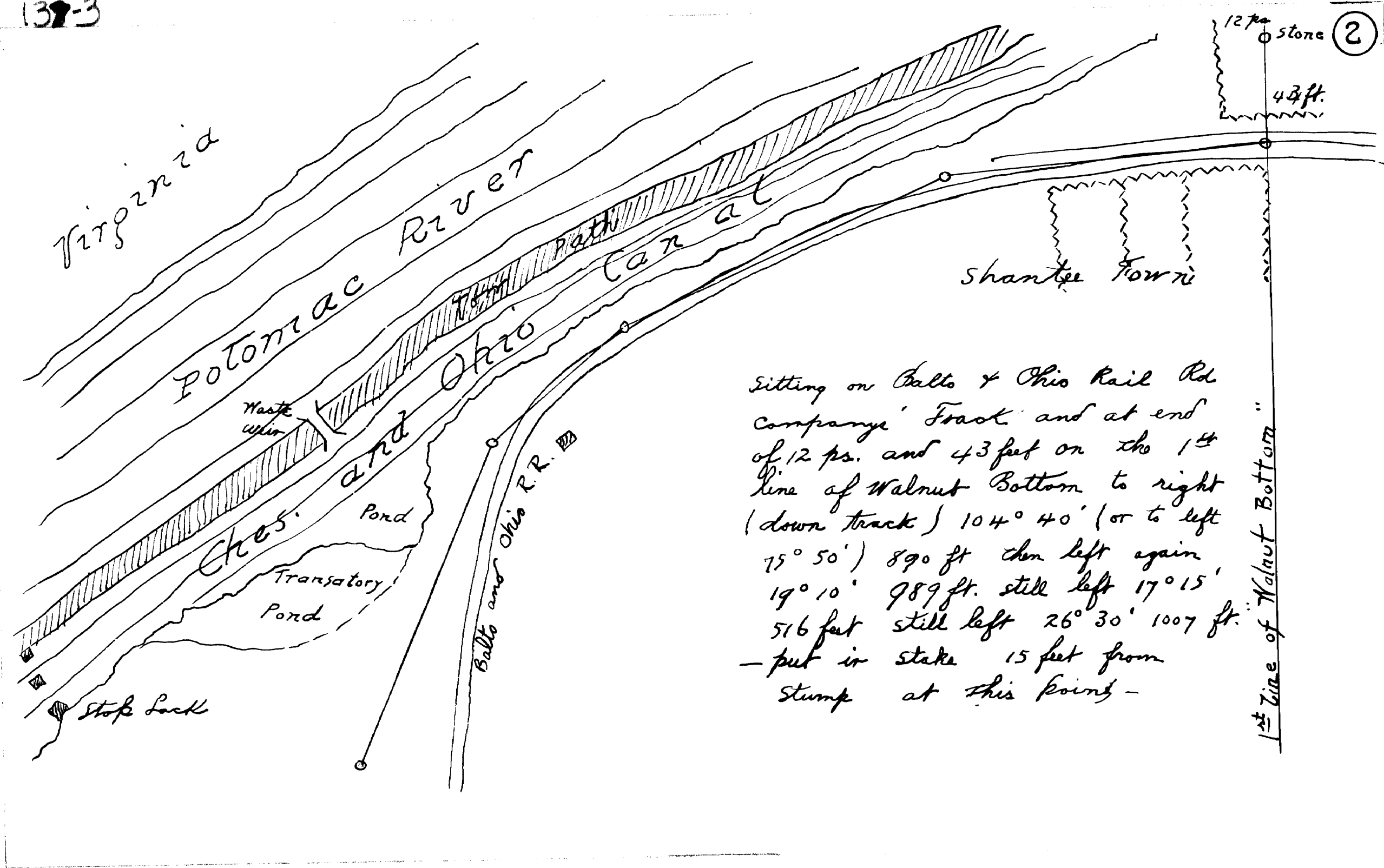
Put in stake at
stopping place -
Said stake is
15 feet from a
large stump

20473
1001
51516
9989
890



Sitting on 1st line W.B. in 43 ft from
B.S. on Stone then to left (down
track)
 $104^{\circ} 40'$ 890 ft - then st left again
 $19^{\circ} 10'$ 989 ft - still left
 $17^{\circ} 15'$ 516 ft - still left
 $26^{\circ} 30'$ 1007 ft -
stopped for the day 6 P.M.

137-3

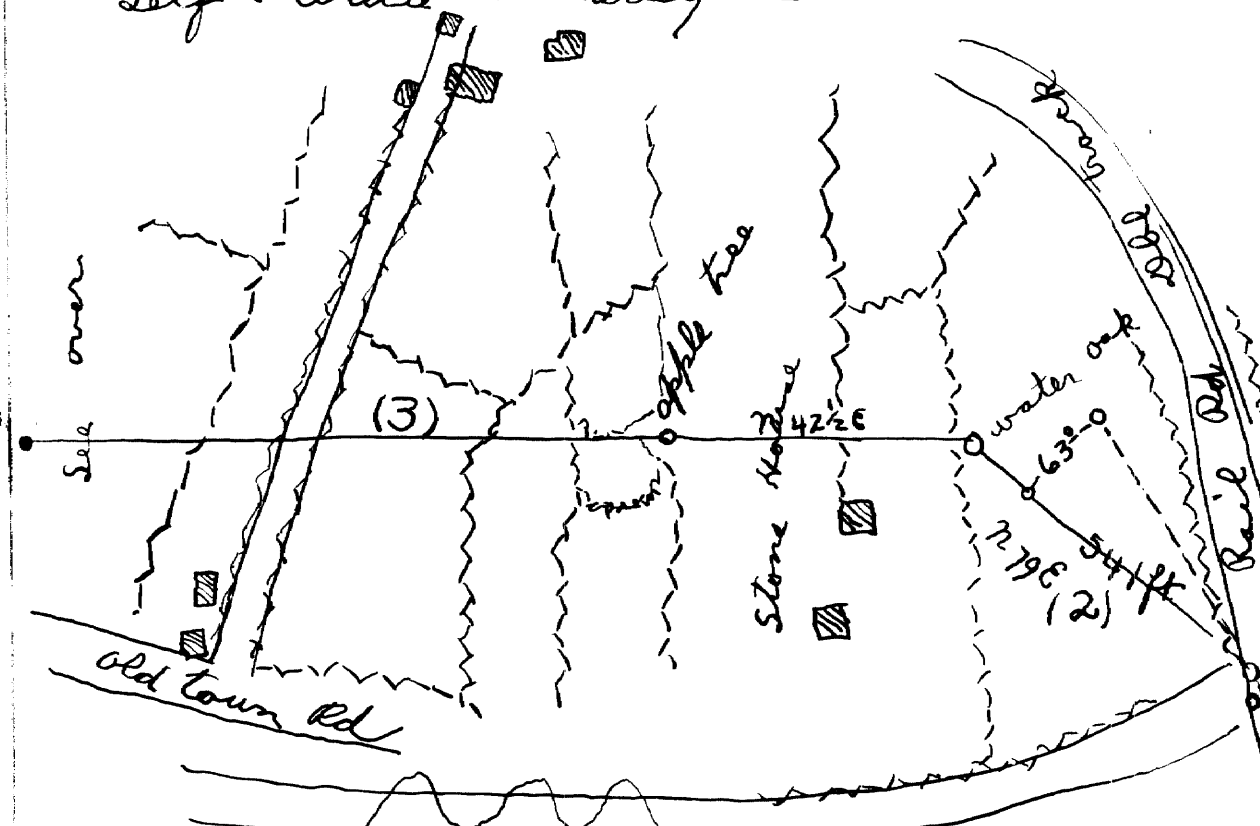


Sitting on Balto & Ohio Rail Rd
 Company's Track and at end
 of 12 ps. and 43 feet on the 1st
 line of Walnut Bottom to right
 (down track) 104° 40' (or to left
 75° 50') 890 ft then left again
 19° 10' 989 ft. still left 17° 15'
 516 feet still left 26° 30' 1007 ft.
 - put in stake 15 feet from
 stump at this point -

1st line of Walnut Bottom

137-4

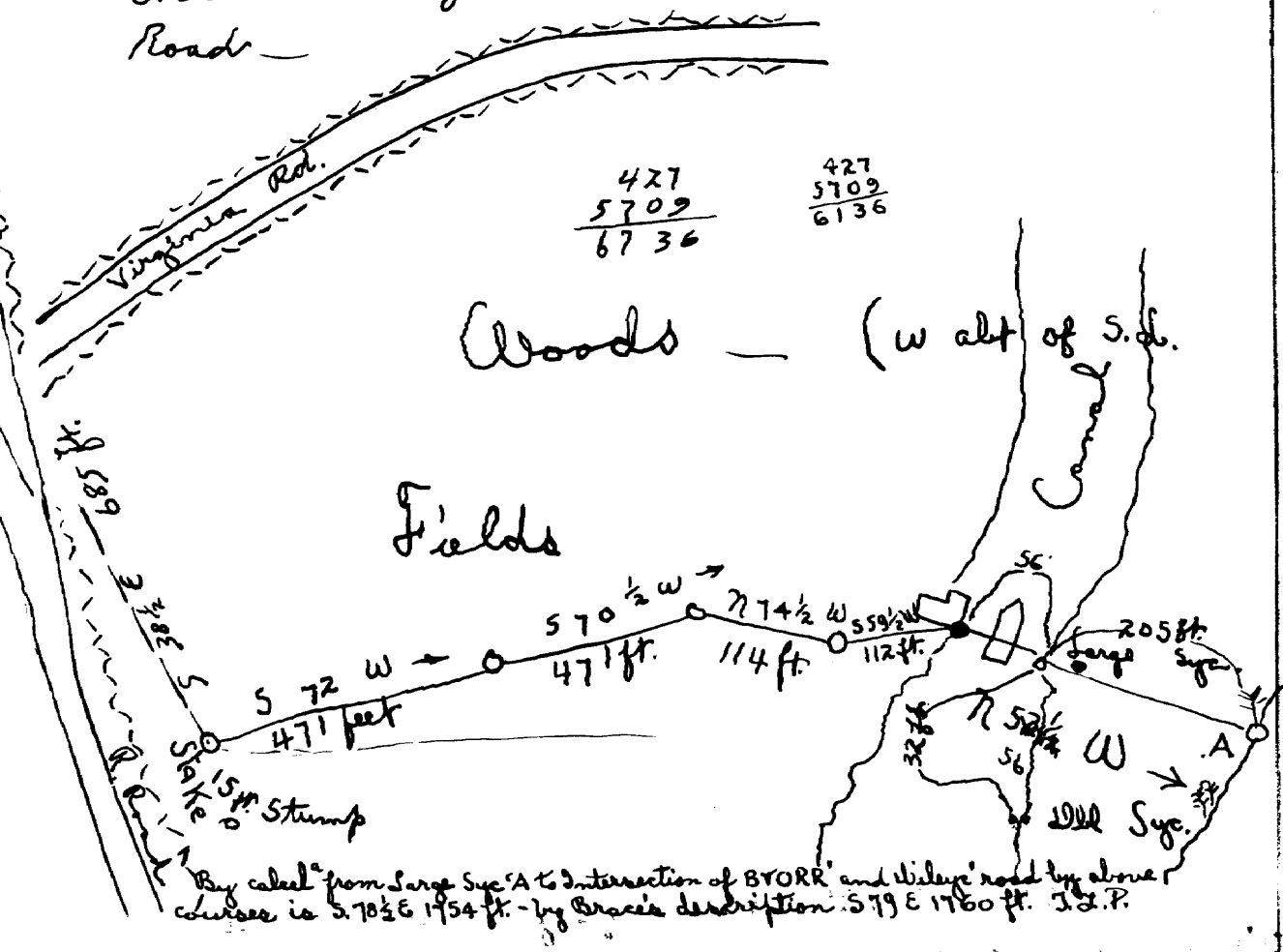
April 13th 1868 AmCanner - Frank Quinn
Self - Willie Scharley -



Began at stake put in and (see page back)
and ran S 72 W. 471 ft - S 70 1/2 W 471 ft -
N 74 1/2 W 114 feet - S 59 1/2 W. 112 ft to inside upper
corner of the outside abutment of the stage
Lock - up

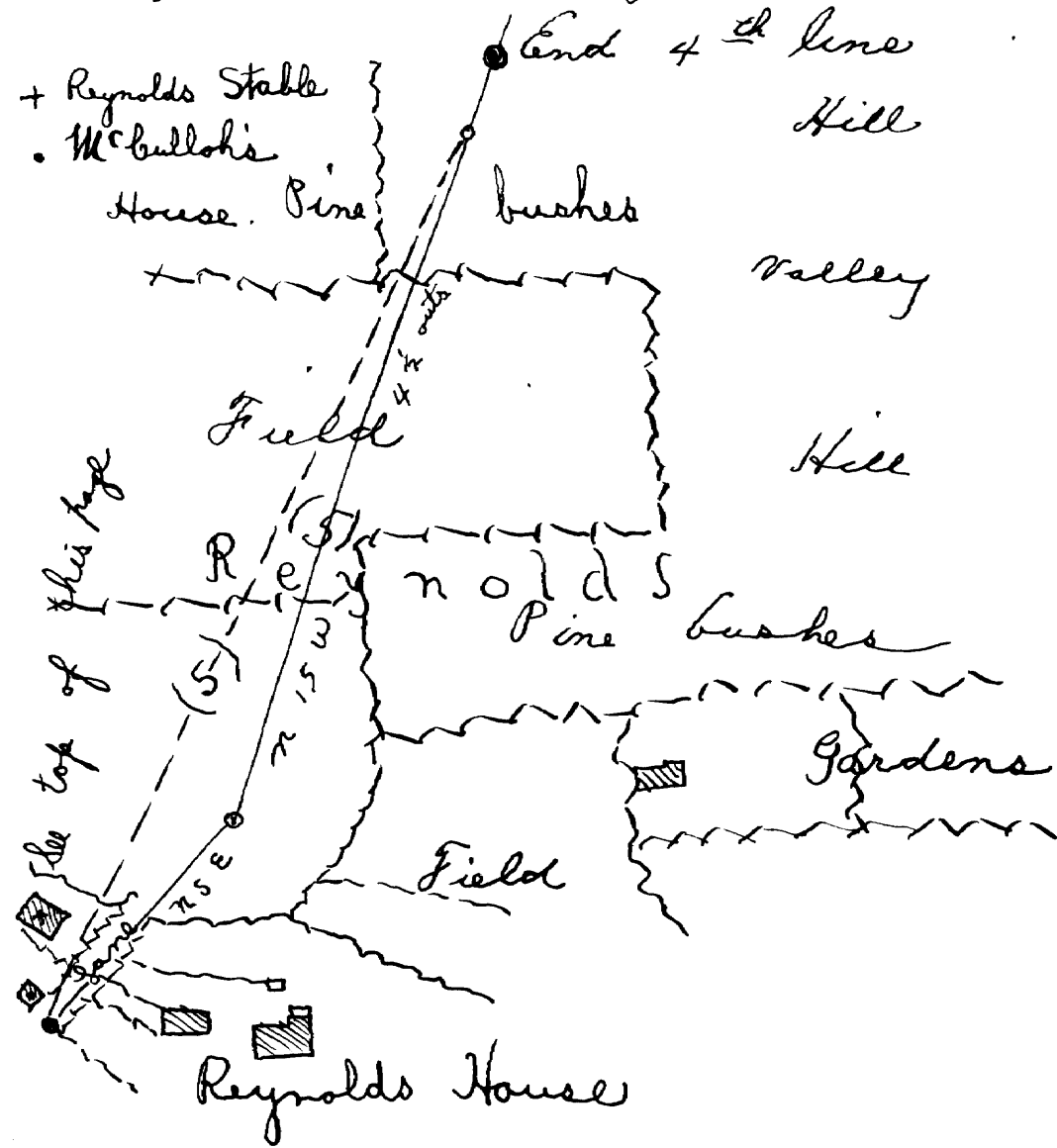
3

then came back to old stake to run C lines
and ran S 38 1/2 E 685 ft to intersection of
B & O R R and Virginia Road then left
63° (2765?) 541 feet to a water oak
in Rubenkamp's Field - then N 42 1/2 E (427 ft)
to an apple tree - still same course 5709 ft)
6136 in all from water oak to Williams
Road -

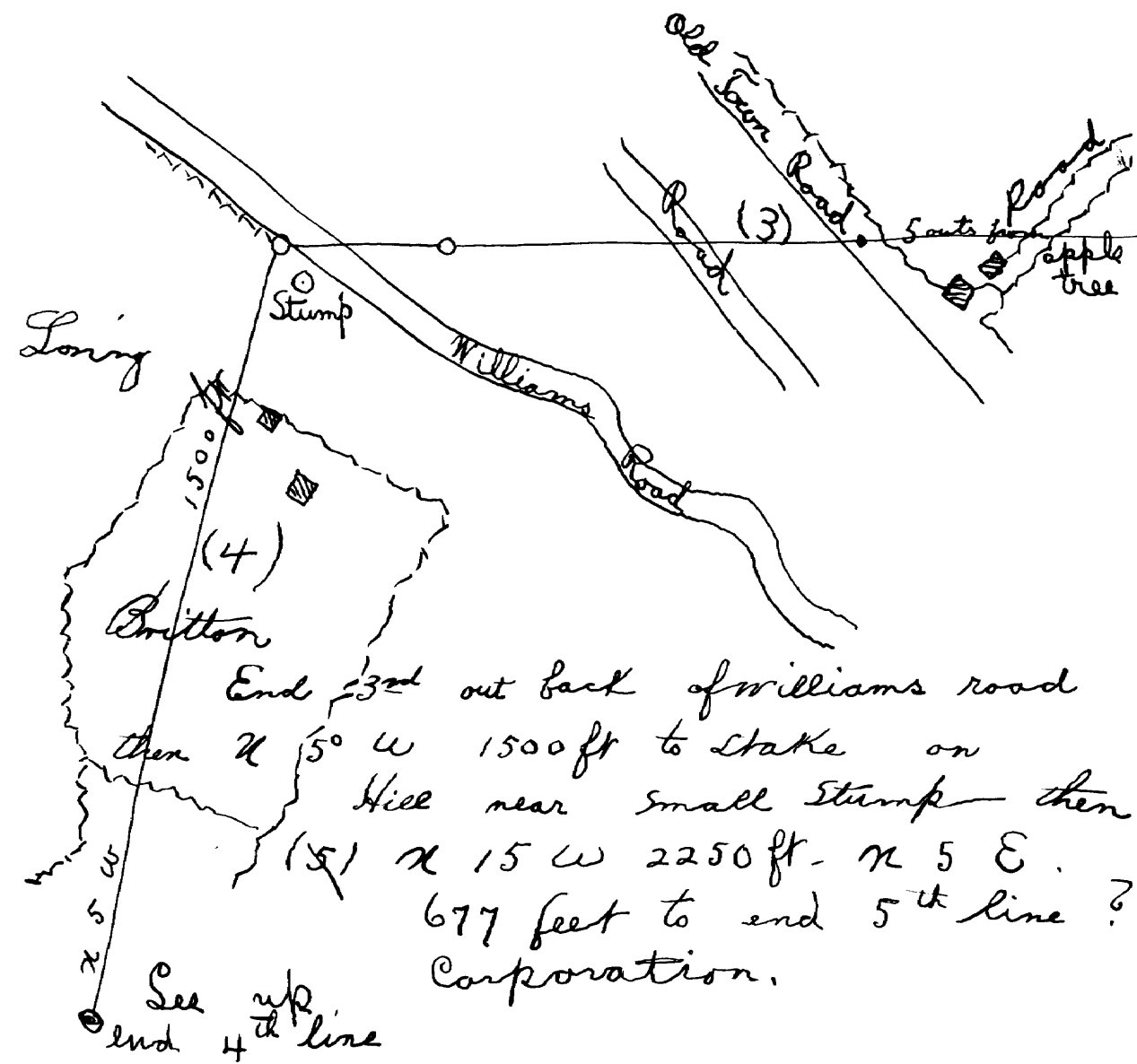


By call from Sarge Syc A to intersection of B & O R R and Wiley's road by above
course is S 70 1/2 E 1754 ft. - by Grace's description S 79 E 1760 ft. J.S.P.

April 13th 1868 McBonner Frank Quinn
Self Willie and Charley -



4th line passes through Britton, Loring,
and others



1376

5

5 6th π 22 W. 925 ft to large white oak tree corner of German Reformed Graveyard lot & supposed corner of "Irono Mistake amended" then π 48 $\frac{1}{2}$ W. 1484 to Bedford Road

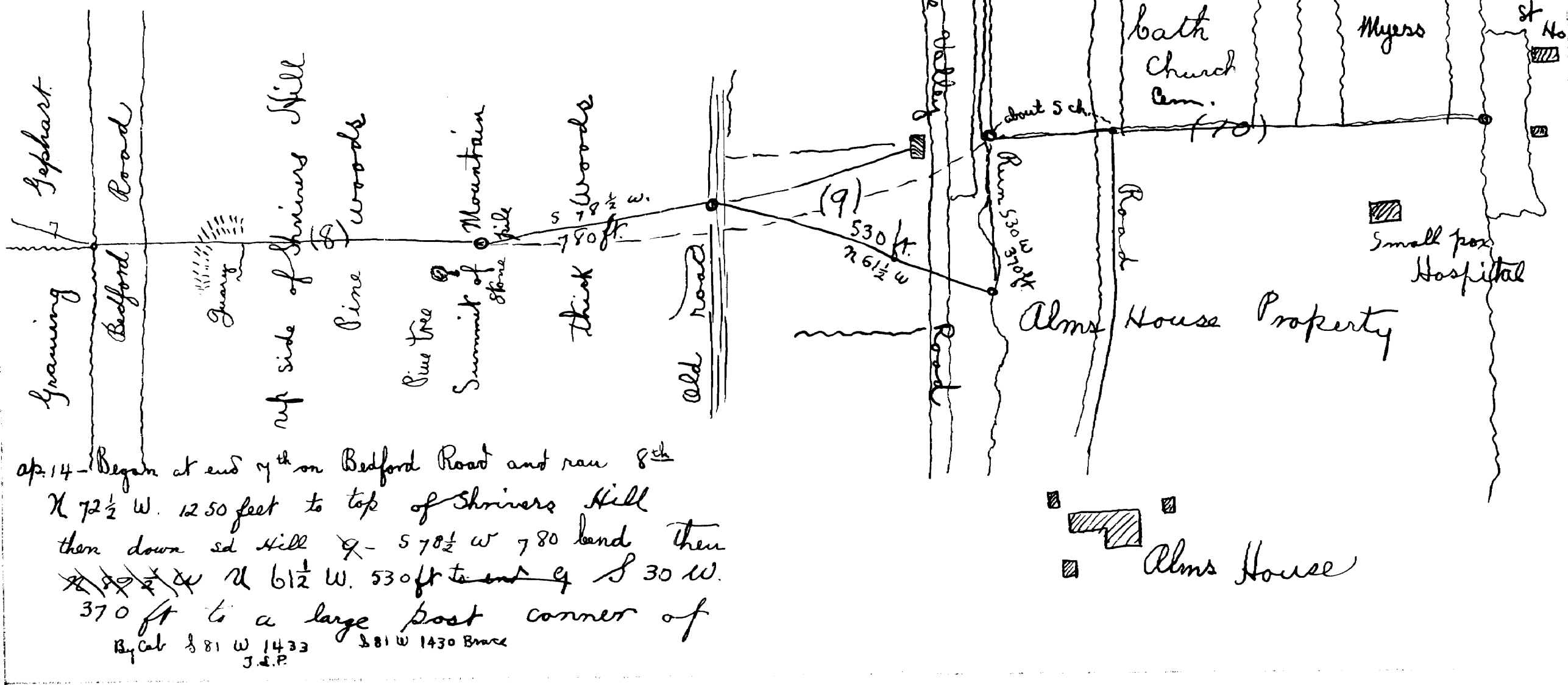


137-1

6

8th line N 67½° W - April 14th '68
 Wm Bonner - James Conner - Frank Quinn -
 H. Cassem - Self & Willie.
 9th S 78½° W

Flood gate and end of 9th line of
 Corporation then along fence 10 N 71° W
 1250 ft to cross fence.

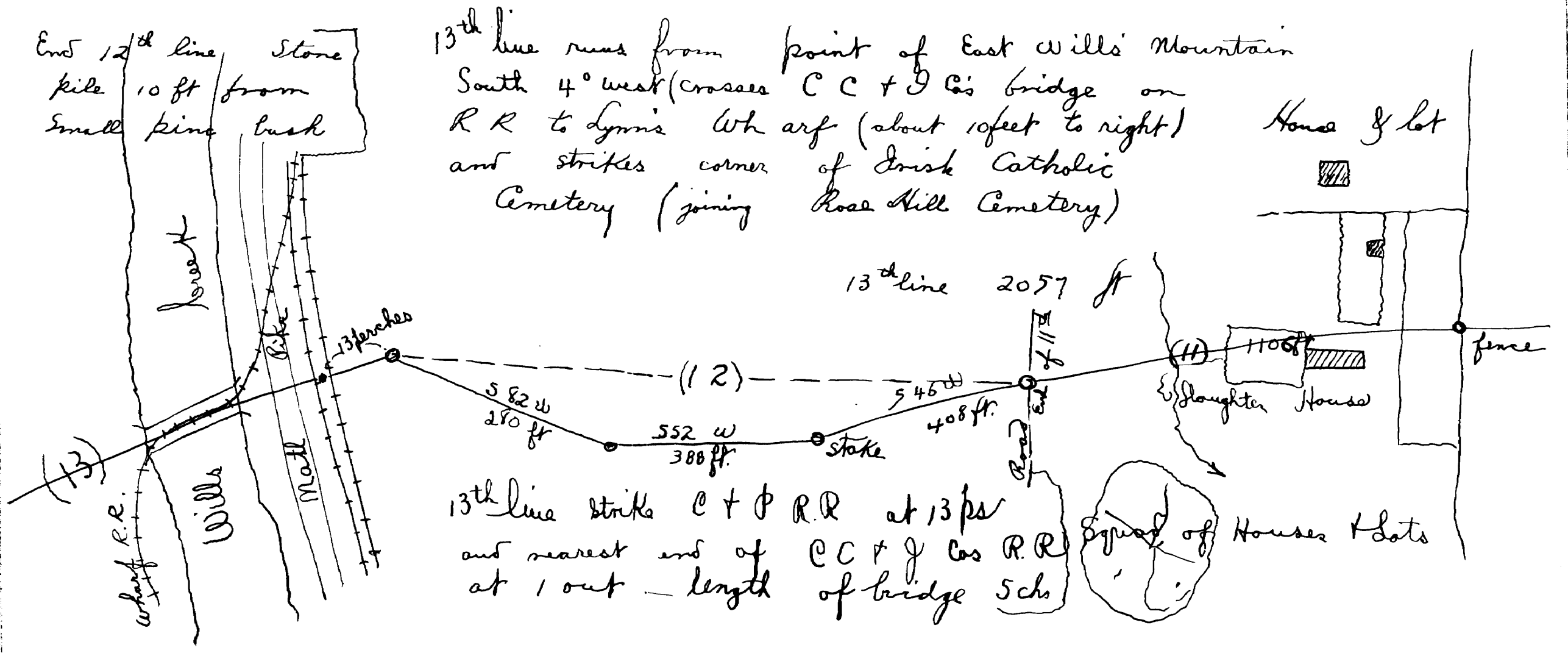


137-8

7

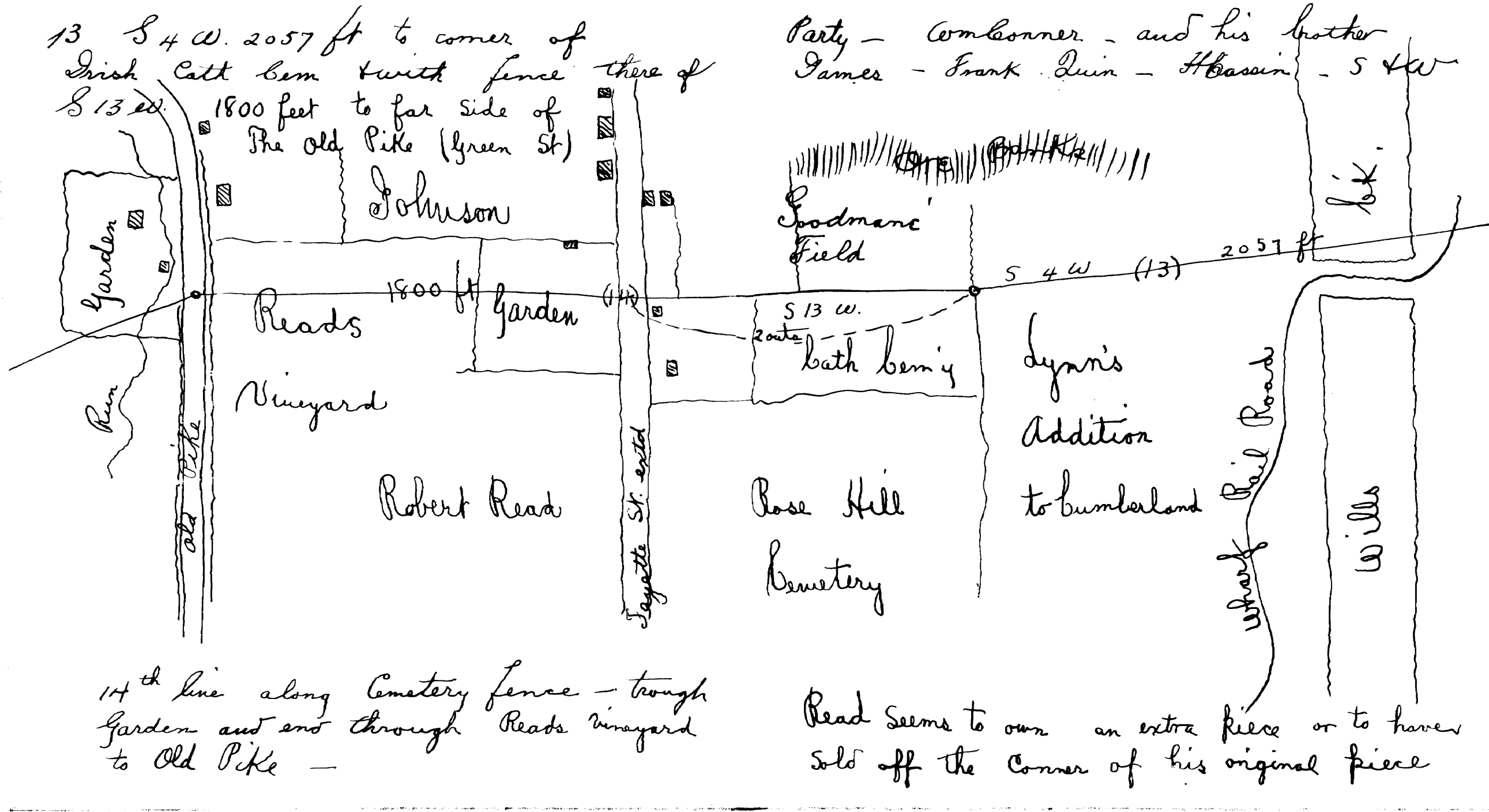
April 14th 1868 -
William Conner, James Bonner - Frank
Quin - A Bassin - Self and Willie -

11th to include slaughter house west
1106 feet then S 46° W 408 ft to stake
S 52° W 388 ft - S 82° W 280 ft to
end 12th line Corporation.



13th line runs from point of East Will's Mountain
South 4° west (crosses C C + J Co's bridge on
R R to Lynn's Wharf (about 10 feet to right)
and strikes corner of Irish Catholic
Cemetery (joining Rose Hill Cemetery)

13th line strikes C + J R.R. at 13 ps
and nearest end of C C + J Co's R.R.
at 1 out - length of bridge 5 chs

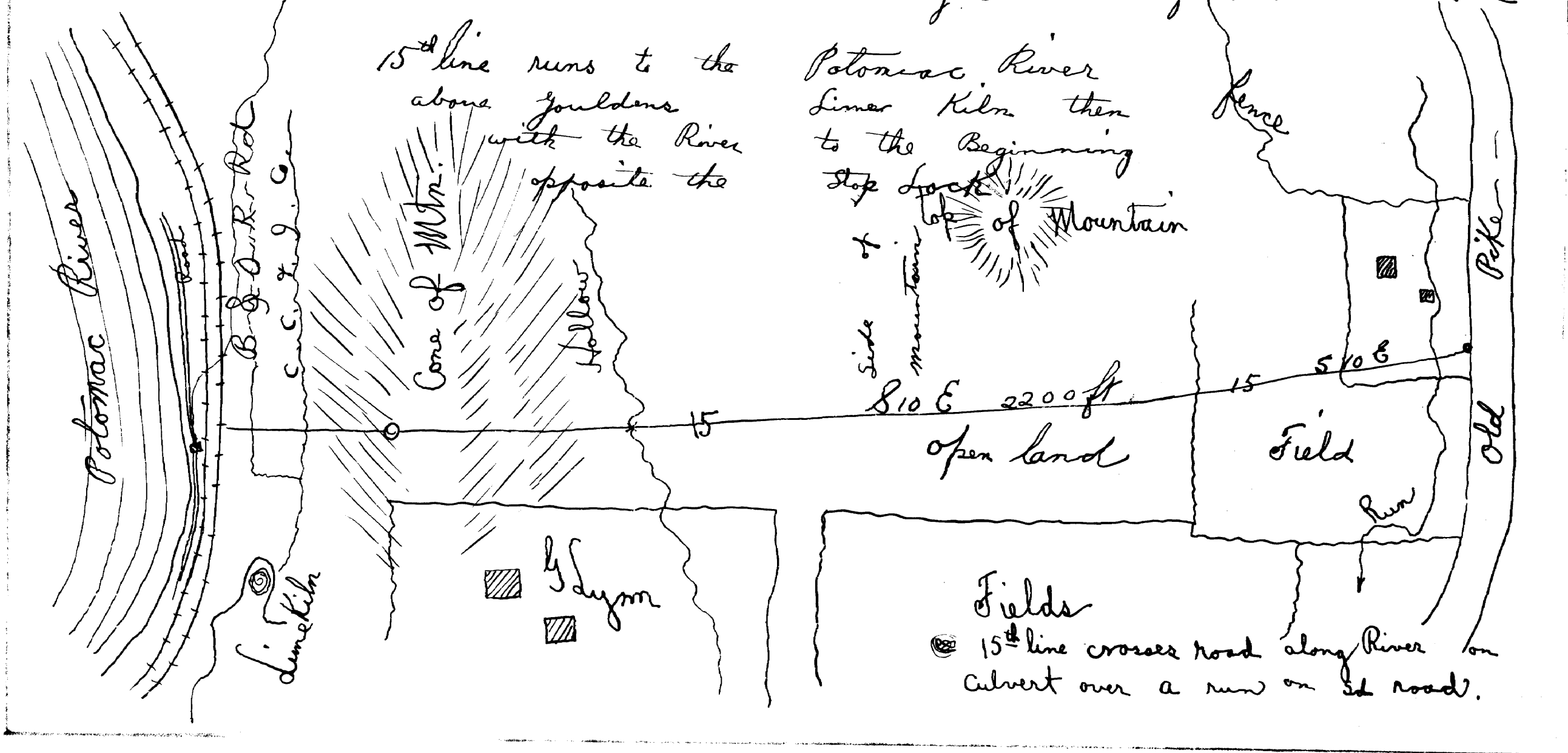


137-10

9

14 S 13 W 1800 ft to Old Pike or
Green Street then ⁽¹⁵⁾ S 10 E 2200 ft
to Poto River

April 14th 1868 - Corn Conner -
James Conner Frank Quinn -
Henry Kessen - Self and willie -



~~137-1~~
137-1

Extract from description of Brace's Survey of City Limit Lines, as recorded in Liber 27 Folio 222, a Land Record of Allegany County, Maryland.

At the request of the Mayor and City Council of Cumberland, Md. this Instrument was recorded May 11, 1868:

Cumberland, Md., May 7th, 1868.

To the Mayor and Council of
The City of Cumberland
Gentlemen:-

According to your instructions I have surveyed and located the new lines for the extension of the Corporate Limits of this City; and submit herewith a map and description of the lines; also the courses and distances of the said lines made by surface measurement.

Courses and distances of the corporate limits of the City of Cumberland as run out in April 1868 by William Brace, C.E.

Beginning at a stone planted on the Eastern Bank of the North Branch of the Potomac River, said stone being N 56° W 205 ft. from the center of the face of the Western Abutment of the first Stop Lock of the Chesapeake & Ohio Canal below Cumberland, and running thence:-

- (1) S. 79° E 1760 ft. to the intersection of the B & O. R. R. with the Wagon Road leading from Cumberland down to Wiley's Ford.
- (2) E. 79° E 540 ft. to a stone.
- (3) N. 42½° E. 6135 ft. to a stone on the North side of the Williams Road.
- (4) N. 5° W 1500 ft. to a stone.
- (5) N. 11° W 2890 ft. to a stone on the South side of Baltimore Pike
- (6) N. 22° W 925 to a stone near a bounded White Oak, a corner of a tract of land called "Irons Mistake Amended"
- (7) N. 48½° W 1484 ft. to a stone at the upper corner of George F. Gephart's Orchard on the East side of the Bedford Road.
- (8) N. 72½° W 1250 ft. to a stone on the top of Pine Hill (commonly called Shriver's Hill)
- (9) S 81° W 1430 to a stone on the West Bank of Dry Run.
- (10) N. 71° W 1250 ft. to a stone.
- (11) Due West 1106 ft. to a stone near a road leading from Stoney Battery up to Will's Mountain.
- (12) S 58½° W 1040 ft. to a stone.
- (13) S 4° W 2050 ft. across Wills Creek above the Iron Bridge to a stone near the corner of the German Catholic Cemetery on Rose Hill.
- (14) S 13° W 1800 ft. to a stone on the South side of the Old Pike
- (15) S 10° E 2200 ft. to a stone on the bank of the said Potomac River above Lynn's Lime Kiln, thence down and with the Maryland side of the River and crossing Wills Creek at the mouth thereof and still down and with said Potomac River to the Beginning.

(Signed)

Wm. Brace, C. E.